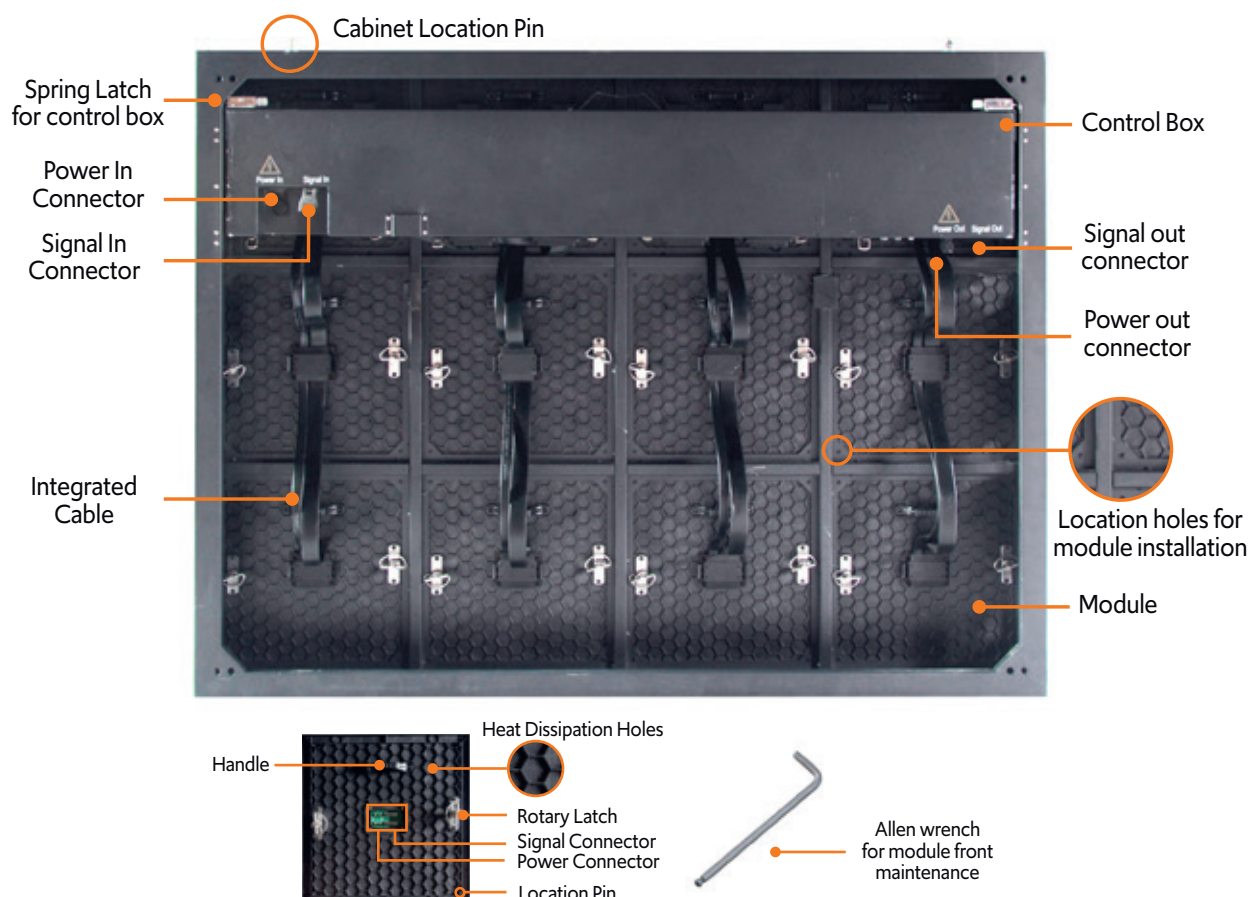
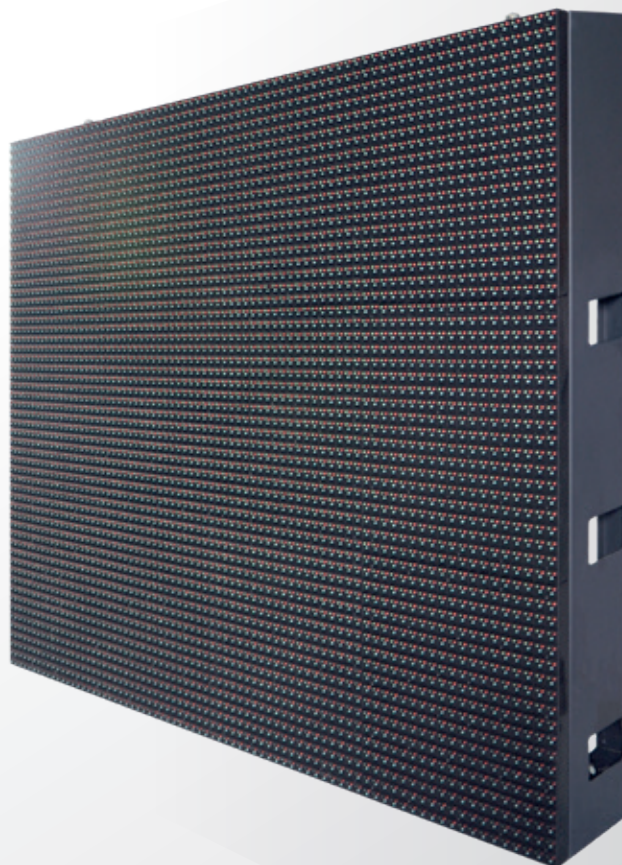
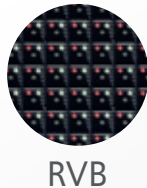


LED Signage E Series

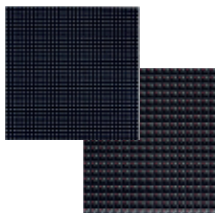


FEATURES



Integrated cable design

One plug to get power and signal through, easy for assembly. The most economical solution for you.



SMD / RVB

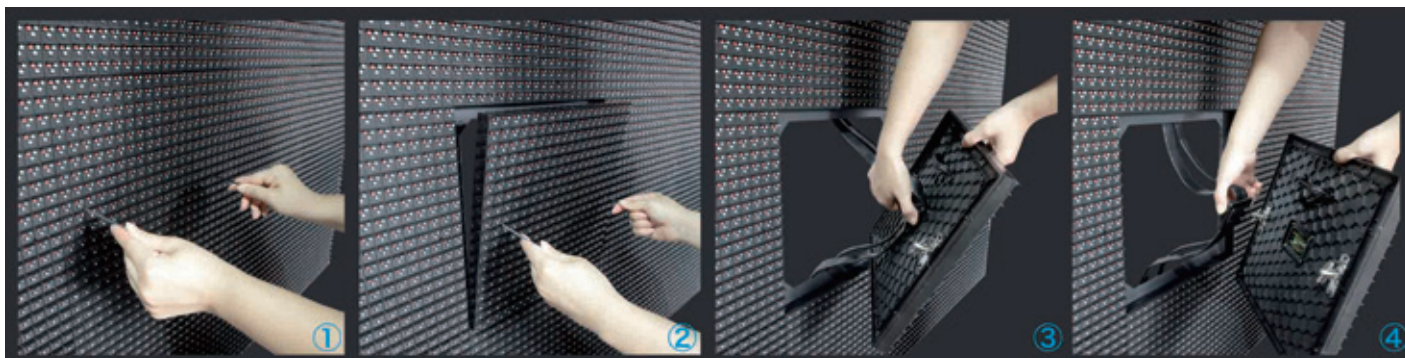
Module available in SMD or RVB



Completely waterproof

IP67 for single module, and the control box is also waterproof totally and separately.

FRONT MAINTENANCE



REAR MAINTENANCE



SPECIFICATIONS

	E10	E16
Pixel Pitch (mm)	9.525	15.24
Pixel Density (dots/m2)	9687	3886
LED Type	DIP346 / SMD 3535	DIP346 /SMD 3535
Panel Size (mm)	1219,2*914,4	1219,2*914,4
Module Size (mm)	304,8*304,8*30	304,8*304,8*30
Cabinet Weight (kgs)	35	35
Panel Material	Aluminium	Aluminium
Maintenance Mode	Front/Rear	Front/Rear
Viewing Angle (°)	H110/V110	H110/V110
Brightness (cd/m2)	6500	8000
Refresh Rate (hertz)	≥3000	≥1200
Grey Scale (bits)	16	16
Voltage (v)	110/220(AC)	110/220(AC)
Average Power Consumption (w/m2)	158	224
Max. Power Consumption (w/m2)	473	672
Operating Humidity Range	10%-90%	10%-90%
Operating Temperature Range	-20°C-65°C	-20°C-65°C
Ingress Protection (Front/Rear)	IP67	IP67
Lifetime (h)	≥100.000	≥100.000

All product specifications are subject to change without prior notice.